

LIVESTOCK EQUIPMENT MANUFACTURER



**PROJECT**  
**SOLUTIONS**  
EQUIPMENT SUPPLIES

**ADD:** No 199, Changxing Road, Jiangbei district Ningbo 315020, China  
**TEL:** +86-574-56195982  
**TEL:** +86-574-56195983  
**FAX:** +86-574-56195983  
**E-MAIL:** info@jgmindustrial.com  
**WEB:** www.jgmindustrial.com



NINGBO JOYGEN MACHINERY CO.,LTD

NINGBO JOYGEN MACHINERY CO.,LTD



## COMPANY PROFILE

JGM Industrial is an equipment manufacturing industry for the automation of all types of livestock farms. With more than 10 years of experience in the market we respond to the needs that farmers look for in a good equipment for the automatic feeding of their farms.

JGM Industrial is mainly characterized by its first class products. We offer a wide range that meets the highest quality criteria. Trust our accredited manufacturing processes. We find undoubtedly the most suitable product for you.

**JOYGEN** MACHINERY

## CONTENT

JOYGEN  
MACHINERY

STAINLESS STEEL



01

PLASTIC



02

03



ALUMINIUM

04



CASTING&WHEEL

OTHERS



05

JOYGEN  
MACHINERY

## DRINKING BOWL

### Stainless steel drinking bowl

- Anatomical design of the drinking cup
- Good hygiene and low water waste
- Drinking nipples can be adjusted
- Increased water intake = increased feed intake
- Greater growth, better feed conversion
- Simple daily operation and cleaning
- Significant water savings

Drinking cup	For	Pigs per cup	Mounting height, cm*
Mini	Weaners	30	12
Standard	Finishers	30	25
Multi	Wean-to-Finish, sows	30 weaners	12
		20 finishers	12
		10 sows	35
Maxi	Sows	10	35



We offer a wide selection of drinking cups for all age groups. The common thing for all our drinking cups is that they all have an ergonomic design. Rounded shape ensures that there are no blind corners, and the closed design on top of the cups prevents dung in the drinking cup. The water nipple is placed in the bottom of the drinking cup and releases only the amount of water, that pigs actually can drink. This means considerable water savings and considerable reduction in the quantity of slurry.

## DRINKING BOWL

### Stainless steel drinking bowl

- Anatomical design of the drinking cup
- Good hygiene and low water waste
- Drinking nipples can be adjusted
- Increased water intake = increased feed intake
- Greater growth, better feed conversion
- Simple daily operation and cleaning
- Significant water savings

Drinking cup	For	Pigs per cup	Mounting height, cm*
13" MINI	Weaners	30	12
15" STANDARD	Finishers	30	25
17" Multi	Wean-to-Finish, sows	30 weaners	12
		20 finishers	12
		10 sows	35
21" Maxi	Sows	10	35



## PIGLET FEEDER



1009

1010

1011

### Stainless steel piglet feeder

- Feeding pan for piglet
- Stainless steel 304 material
- Push and handle hook for slotted flooring
- Available with metal or plastic handle cap
- Customize according to drawing

## ROTATABLE FEEDER PAN



1012

1013

1014

### Stainless steel rotatable piglet feeder with divider

- Rotatable pan for piglet
- Stainless steel 304 material
- Features spring loaded universal J-clamp to quickly secure to flooring.
- Available with metal or plastic handle cap
- Customize according to drawing

## STAINLESS STEEL CATTLE DRINKING BOWL



1015



1016



1017

### Stainless steel drinking bowl

- material: 1.0mm thickness SUS304 stainless steel;
- smooth edge protect animal cutting use for cattle&horse

Mode: 1/2" plastic float valve DN15B  
 Install Size: 196mm(Maximum)  
 Thread: 1/2" Inch  
 Body Material: ABS(Acrylonitrile Butadiene Styrene plastic)  
 Float Ball Material: PE(Polyethylene)  
 Seals Material: SR(Silicon Rubber)  
 Working Pressure: 0.05-1.2 Mpa(0.1Mpa=1Bar=14.5Psi)  
 Working Temperature: 0-70 C

Mode: 1/2" plastic float valve DN15H  
 Install Size: 177.00mm(Maximum)  
 Thread: 1/2" Inch  
 Body: ABS(Acrylonitrile Butadiene Styrene plastic)  
 Float Ball: PE(Polyethylene)  
 Seals: SR(Silicon Rubber)  
 O' Ring: NBR(Nitrile Butadiene Rubber)  
 Working Pressure: 0.01-1.2 Mpa(0.1Mpa=1Bar=14.5Psi)  
 Working Temperature: 0-70 C



## WATER SUPPLY FOR PIGLETS

### Piglet bowl drinker

- material: 1.0mm thickness SUS304 stainless steel;
- stainless steel pipe with 1/2" connection
- Adjustable pipe length (80-130 mm)
- size: W11\*H12 cm
- use for piglet&nursery (3-15 kg)



1019

### Drinking cup with stainless plate

- Reduced water pressure
- Very gentle for piglets
- Connects separate water supply via a reduction valve
- Made of stainless steel



1018

### Drinking cup for piglets

- Stainless steel drinking cup
- Height adjustable drinking valve
- No sharp corners
- Less accumulation of dirt and better hygiene
- Connected to sow water



1020

1022

1023

1024

1025

## NIPPLE DRINKER

### Ball drinker

G thread(European pipe thread) or NPT thread(American pipe thread)  
 EPDM or NBR washer



NO 1026

1/2" Bite nipple drinker for Piglet  
 Complete stainless steel drinker body with ball bite  
 Length 63 mm, (2.5 inches)  
 For piglets up to 35 kgs, (77 lbs.)



NO 1027

1/2" Bite nipple drinker for Pig  
 Complete stainless steel drinker body with ball bite  
 Length 78 mm (3 inches)  
 For Finishers



NO 1028

- Complete stainless steel drinker body with ball bite
- 1/2" thread x 3/4" body
- For sows and bulls



NO 1029

- Complete stainless steel drinker body with ball bite
- 1/2" thread 79mm
- For Finishers



NO 1030

Complete stainless steel drinker body with ball bite  
 3/4" thread x 1/2" body  
 79mm  
 For sows and bulls



NO 1031

Complete stainless steel drinker body with ball bite  
 1/2" thread  
 For sows and bulls

### Bite nipple drinker



NO 1032

3/8" Bite nipple drinker,  
 Complete stainless steel drinker body,  
 5mm pin  
 For pigletFor sows and finishers



NO 1033

1/2" thread\*3/8" body Bite nipple drinker,  
 Complete stainless steel drinker body,  
 5mm pin 55mm length  
 With wrench flats  
 For piglets



NO 1034

1/2" thread ,Rod 22 mm,6 mm pin.  
 Complete stainless steel drinker body  
 For piglet



NO 1035

1/2" thread, Rod 21 mm\*64mm Length.  
 Complete stainless steel drinker body,  
 8mm pin

## Bite nipple drinker



**NO 1036**  
1/2" thread, Rod 21 mm\*64mm Lenght.  
Complete stainless steel drinker body,  
8mm pin



**NO 1037**  
1/2" thread\*3/4" body Bite nipple  
drinker,  
Complete stainless steel drinker body,  
8mm pin  
For sows and finishers



**NO 1038**  
3/4" thread\*3/4" body Bite nipple  
drinker,  
Complete stainless steel drinker body,  
8mm pin  
For sows and finishers



**NO 1039**  
Bite nipple drinker  
3/8" thread \* 3/8" body,Hex 17 mn,  
Complete stainless steel drinker body,  
5mm pin 55mm length  
For piglet



**NO 1040**  
Bite nipple drinker  
1/2" thread ,Hex 22 mn,5mm pin  
Complete stainless steel drinker body  
For piglet



**NO 1041**  
Bite nipple drinker  
1/2" thread ,Hex 22 mn, 6mm pin  
Complete stainless steel drinker body  
For piglet



**NO 1042**  
1/2" thread \* 3/4" body  
Complete stainless steel drinker body  
Hex 27 mn, 8mm pin,80mm length  
For sows and finishers



**NO 1043**  
3/4" thread \* 3/4" body  
Complete stainless steel drinker body  
Hex 27 mn, 8mm pin,80mm length  
For sows and finishers



**NO 1044**  
1/2" thread ,Hex 22 mn,  
8mm pin. 64mm length  
Complete stainless steel drinker body  
For weaner and finishers

## Sprayer nipple drinker



**NO 1045**  
1/2" Sprayer Nipple Drinker  
All stainless steel  
1/2" threads  
For piglets thru finishers



**NO 1046**  
3/8" Sprayer Nipple Drinker  
All stainless steel  
3/8" female threads  
For weaners, fatteners, finishers



**NO 1047**  
1/2" Cattle bowl drinker,Hex  
body,Length 50 mm



**NO 1048**  
1/2" sprayer drinker  
Complete stainless steel drinker,Body  
Hex 22 mm,Lenth 47 mm,presure  
button 17mm,weight: 90g.4.5 litres/  
min  
Slip sprayer



**NO 1049**  
1/2" sprayer drinker  
Complete stainless steel drinker,Body  
Hex 22 mm,Lenth 47 mm,presure  
button 17mm,weight: 90g.4.5 litres/  
min  
Two or three holes



**NO 1050**  
1/2" Sprayer Nipple Drinker  
Complete stainless steel drinker  
body,with slip  
For sows  
Up to 8 ltr/min flow



**NO 1051**  
1/2" Stainless steel nipple drinker  
Hex 24mm,.63.5 mm length.



**NO 1052**  
1/2" Sprayer Nipple Drinker  
Complete stainless steel drinker  
body,with hole.  
For sows  
Up to 8 ltr/min flow

## Wet feeding nipple drinker



**NO 1053**  
Wet feeding nipple drinker  
1/2" Complete stainless steel drinker  
body, 8 mm pin  
Specially designed spring to reduce  
breakage  
For piglets thru finishers



**NO 1054**  
Wet feeding nipple drinker  
1/2" Complete stainless steel drinker  
body Hex 22 mm, 8 mm pin 60 mm  
length  
Specially designed spring to reduce  
breakage  
For piglets thru finishers

STAINLESS STEEL



STAINLESS STEEL



**Wet feeding nipple drinker**



**NO 1055**  
Wet feeding nipple drinker  
1/2" Complete stainless steel drinker  
body, 8 mm pin 60 mm length  
hex at bottom of body for installation  
For piglets thru finisherstage  
For piglets thru finishers



**NO 1057**  
Wet feeding nipple drinker 1/2"  
Complete stainless steel  
Hex 22 mm, 12mm pin. 46 mm length  
body, outter pin length 20 mm  
Specially designed spring to reduce  
breakage  
For finishers, fatteners, sows.



**NO 1059**  
1/2" thread high flowing wet feeding  
drinker With wrench flats  
46 mm length, outter pin 20mm, Dia 11  
mm hollow tube pin  
For weaners, fatteners, finishers



**NO 1061**  
Wet feeding nipple drinker  
1/2" thread, 106 mm length, pin 8 mm.  
For weaners, fatteners, finishers



**NO 1063**  
Wet feeding nipple drinker  
1/2" female thread, 84 mm lenth pin 8  
mm.  
Thick washer eliminates need for pipe  
tape  
For weaners, fatteners, finishers



**NO 1056**  
Wet feeding nipple drinker 1/2"  
Complete stainless steel  
Hex 22 mm, 12mm pin. 46 mm length  
body, outter pin length 15mm  
Specially designed spring to reduce  
breakage  
For finishers, fatteners, sows.



**NO 1058**  
1/2" thread high flowing wet feeding  
drinker Hex 22 mm.  
46 mm length, outter pin 20mm, Dia 11  
mm hollow tube pin  
For weaners, fatteners, finishers



**NO 1060**  
Wet feeding nipple drinker 1/2"  
Complete stainless steel  
Hex 22 mm, 12mm pin. 46 mm length  
body, outter pin length 20 mm  
Specially designed spring to reduce  
breakage  
For finishers, fatteners, sows.



**NO 1062**  
Wet feeding nipple drinker  
1/2" female thread, 84 mm lenth pin 8  
mm.  
Thick washer eliminates need for pipe  
tape  
For piglets thru finishers



**NO 1064**  
Wet feeding nipple drinker  
1/2" female thread, 84 mm lenth pin 8  
mm.  
Thick washer eliminates need for pipe  
tape  
For piglets thru finishers

**Wet feeding nipple drinker**



**NO 1065**  
Wet feeding nipple drinker  
1/2" female thread, Hex 24mm, 70mm  
length, pin 8 mm.  
For weaners, fatteners, finishers



**NO 1067**  
Wet feeding nipple drinker  
Hex 21,70 mm length, pin 8mm.  
For weaners, fatteners, finishers



**NO 1069**  
Wet feeding nipple drinker  
1/2" female thread, 84 mm lenth pin 8  
mm.  
For weaners, fatteners, finishers



**NO 1071**  
with 3/8" female body drinker for  
trough eat/drink  
hex. 22 - pin Ø 8x34  
Nipple drinker for trough eat/drink  
with brass body and stainless steel  
pipe



**NO 1073**  
Bowl nipple drinker  
1/2" Complete stainless steel drinker body Hex 22 mm,  
Available with stainless steel nuts Hex 27 mm.  
For Piglets, weaners, finishers and sow.  
Small: 61mm body length, pin Ø8\*52 mm length. For piglet  
Midium: 71mm body length, pin Ø8\*70 mm length, for finisher  
and sow  
Big: 81 mm body length, pin Ø8\*84.5mm length, for sow and  
fatten



**NO 1066**  
Wet feeding nipple drinker  
1/2" Complete stainless steel drinker  
body Hex 24 mm, 11 mm pin 94 mm  
length  
Very high flow, up to 12 ltr./min.  
body, with hole.  
For sows  
Up to 8 ltr/min flow



**NO 1068**  
Wet feeding nipple drinker  
Hex 24,74 mm length, pin 8mm.  
For weaners, fatteners, finishers



**NO 1070**  
with 3/8" female body drinker for  
trough eat/drink  
hex. 22 - pin Ø 8x34  
Nipple drinker for trough eat/drink  
with brass body and stainless steel  
pipe



**NO 1072**  
1/2" Stainless steel nipple drinker  
Hex 24mm. 138 mm length. Φ 6 \*61  
mm Length pin.

STAINLESS STEEL



STAINLESS STEEL



### Wet feeding nipple drinker



**NO 1074**

1/2" double sides thread nipple drinker  
Pin 8mm. Available with brass or stainless steel cap



**NO 1075**

Wet feeding nipple drinker  
3/8" female thread, Hex 22mm, 61mm length, pin 12 mm.  
For piglets thru finishers



**NO 1076**

### Brass stainless steel wet feeding nipple drinker



**NO 1077**

Wet feeding nipple drinker  
1/2" brass thread and stainless steel body  
Hex 21, pipe  $\Phi$ 21, pin  $\Phi$ 12\*15 mm  
Bowl type, For weaners, fatteners, finishers



**NO 1078**

Brass material  
1/2" two sides thread complete nipple drinker  
Hex 21 mm, pin  $\Phi$  8mm, 91 mm length finishers



**NO 1079**

Stainless steel  
1/2" two sides thread complete nipple drinker  
Hex 21 mm, pin  $\Phi$  8mm, 91 mm length finishers

### Brass stainless steel bite drinker



**NO 1080**

Nipple drinkers  
1/2" Brass thread



**NO 1081**

Nipple drinkers  
3/8" Brass thread  
Hex 17mm. Pipe  $\Phi$ 16mm,  
For piglet



**NO 1082**

Nipple drinkers  
1/2" Brass thread  
Hex 21mm. Pipe  $\Phi$ 16mm,  $\Phi$  6 mm pin  
For piglet



**NO 1083**

Nipple drinkers  
1/2" Brass thread  
Hex 25mm. Pipe  $\Phi$ 25mm,  $\Phi$  8 mm pin  
For sows and finishers



**NO 1084**

Nipple drinkers  
1/2" Brass thread  
Hex 27mm. Pipe  $\Phi$ 25mm,  $\Phi$  8 mm pin  
For sows and finishers

### Brass spayer drinker



**NO 1085**

1/2" sprayer drinker  
Complete brass, Body Hex 22 mm, Length 47 mm, pressure button 17mm, weight: 90g, 4.5 litres/min  
With holes



**NO 1086**

1/2" Cattle bowl drinker, Hex body, Length 50 mm  
Complete brass with slip



**NO 1087**

1/2" nipple drinker with hollow tube  
pin  $\Phi$ 11mm  
70 mm length.

### Cattle bowl drinker



**NO 1088**

1/2" complete brass nipple drinker slip,  
51mm length, outer pin 8mm length.  
With brass nuts  
For cattle bowl

Brass and stainless steel body,  
49mm length with brass nuts  
For cattle bowl



**NO 1089**

Stainless steel nipple drinker for cattle bowl

STAINLESS STEEL



STAINLESS STEEL



STAINLESS STEEL



**NO 1090**  
1/2" Brass and stainless steel body,  
111g,49mm lenth  
For cattle bowl



**NO 1091**  
1/2" complete stainless steel body,  
111g,49mm lenth  
For cattle bowl



**NO 1092**  
1/2" long thread nipple drinker with  
hole  
With stainless steel nuts and rubber  
ring  
For cattle bowl



**NO 1093**  
Customize drinker parts

**Pet drinker**



**NO 1094**  
• Rabbit Nipple drinker, all stainless  
steel  
• With bite function, therefore almost  
no water spillage



**NO 1095**  
JGM Artupic Poultry drinker.  
Double holes.  
plastic material and advanced  
stainless steel parts.  
Water outlet 360°

**ACCESSORIES**

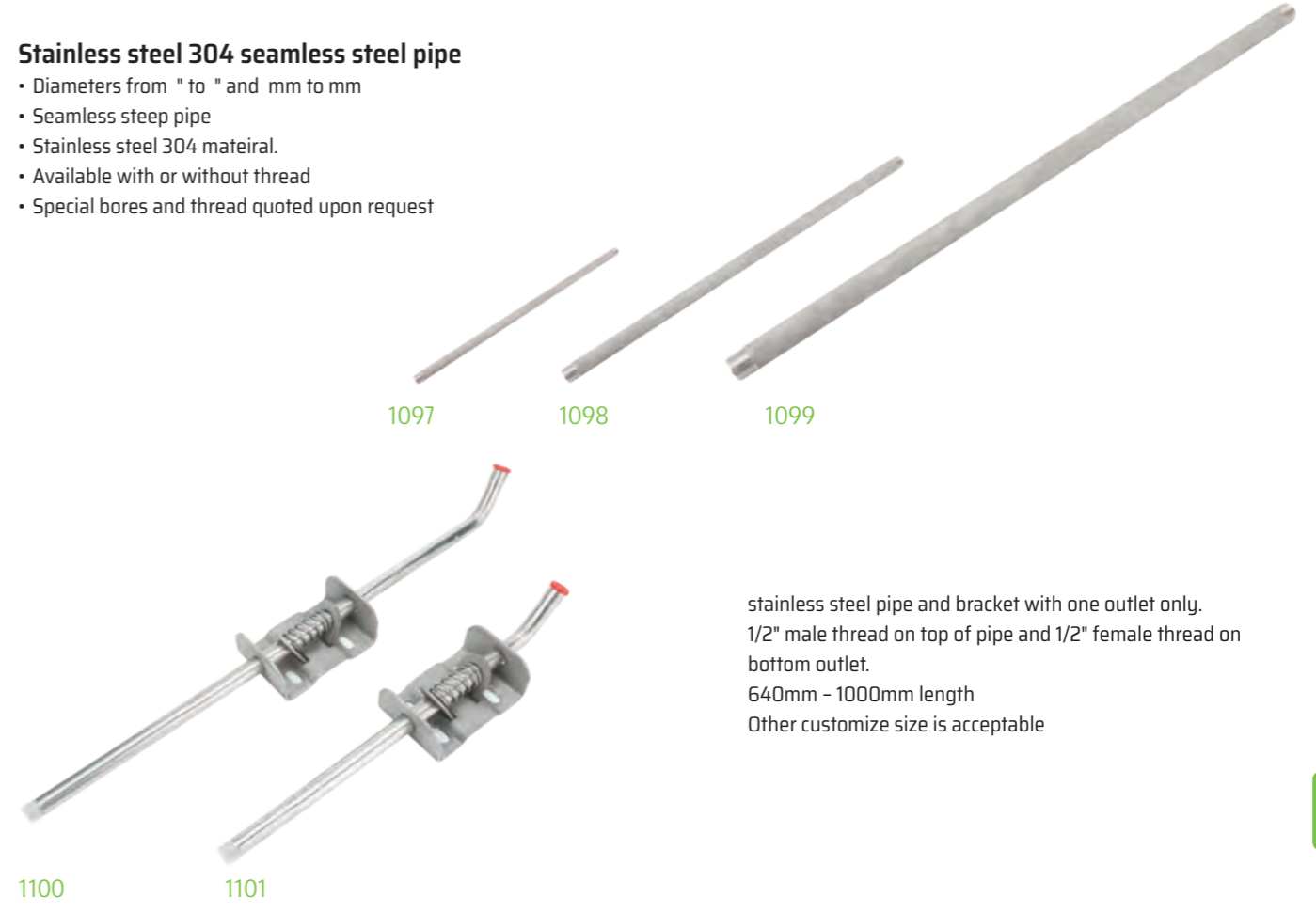


1096

**SST PIPE BRACKET**

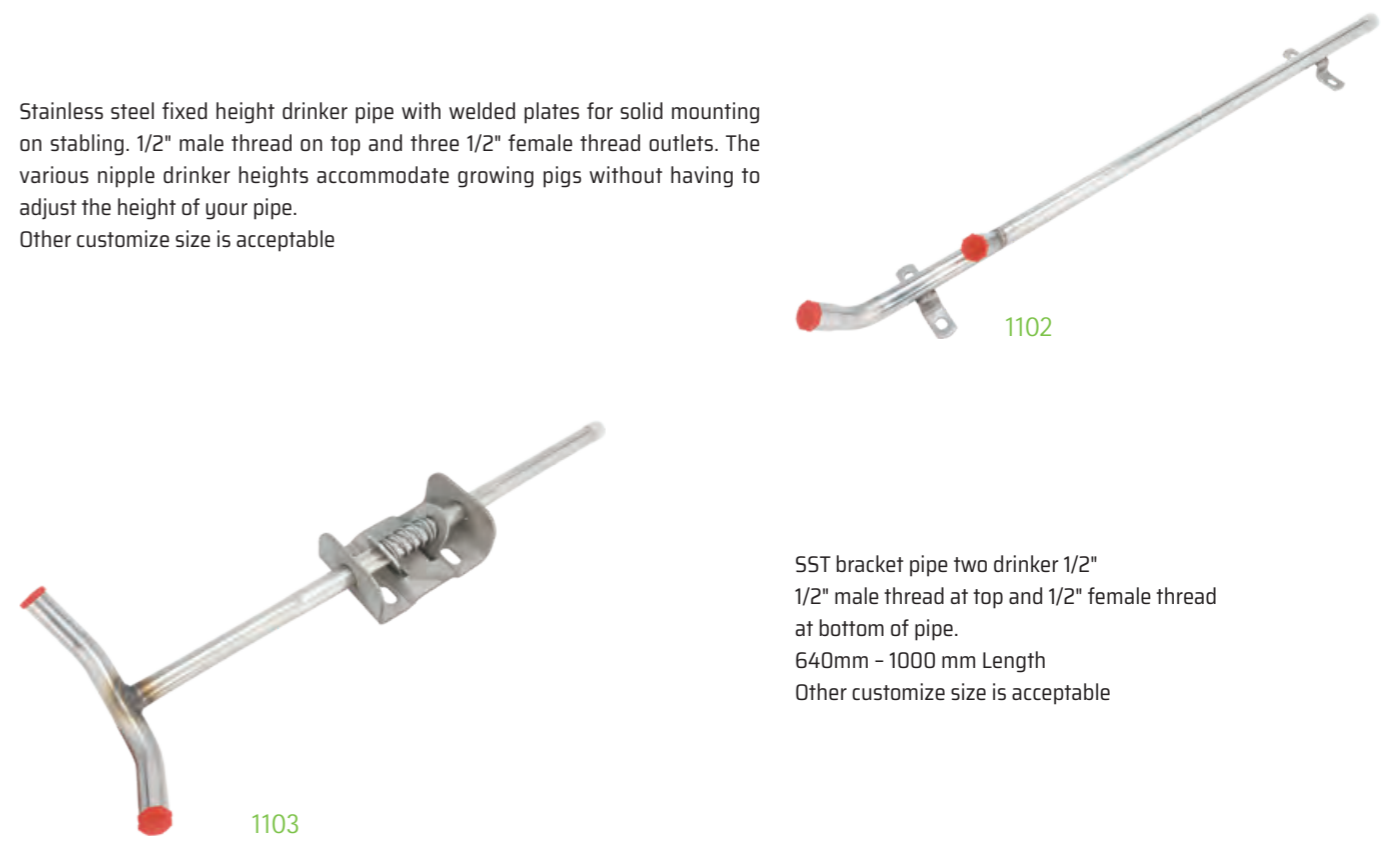
**Stainless steel 304 seamless steel pipe**

- Diameters from " to " and mm to mm
- Seamless steep pipe
- Stainless steel 304 mateiral.
- Available with or without thread
- Special bores and thread quoted upon request



stainless steel pipe and bracket with one outlet only.  
1/2" male thread on top of pipe and 1/2" female thread on  
bottom outlet.  
640mm - 1000mm length  
Other customize size is acceptable

Stainless steel fixed height drinker pipe with welded plates for solid mounting  
on stabling. 1/2" male thread on top and three 1/2" female thread outlets. The  
various nipple drinker heights accommodate growing pigs without having to  
adjust the height of your pipe.  
Other customize size is acceptable



SST bracket pipe two drinker 1/2"  
1/2" male thread at top and 1/2" female thread  
at bottom of pipe.  
640mm - 1000 mm Length  
Other customize size is acceptable

STAINLESS STEEL





## FITTING BARBS & NUTS



1103-1106

**Stainless steel barbs**  
 1/4" Barb X 1/4" FPT  
 1/4" Barb X 5/8" FPT  
 1/4" Barb X 1/2" FPT  
 5/16" Barb X 1/2" FPT



1107-1108

**Stainless Steel Fittings**  
 1/4" Barb X 1/2" MPT



1109-1110

**Stainless Steel 1/4" barb x 1/4" swivel, -2 piece Fitting**



1111

**1/2" Stainless steel nuts**



1112-1115

**Stainless Steel bracket elbow**  
 • 1/2" x 45 degree angle  
 • 1/2" x 60 degree angle  
 • 1/2" x 75 degree angle  
 • 1/2" x 90 degree angle



1116-1117

**Stainless steel U bolts**  
 60X48,M6x1  
 65X36,M6x1  
 41X36,M6x1



1118

**Stainless steel T anchor**  
 152X120,M10X1.5



1119

**Stainless steel 304 door locker 64X42**



1120-1121

**Brass fitting 1/2" - 1/2" MPT**



1122-1123

**Stainless Steel barbs**  
 1/2"-1/2"  
 Hex 24 \*54 mm  
 Hex 24 \* 65 mm



1124

**Stainless steel barbs 1/2" - 2/8"**



1125



1126-1128



1129



1130

## FASTENER



1131



1132



1133



1134

## FARROWING CRATES PVC PANEL

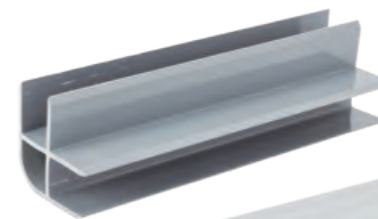


1135

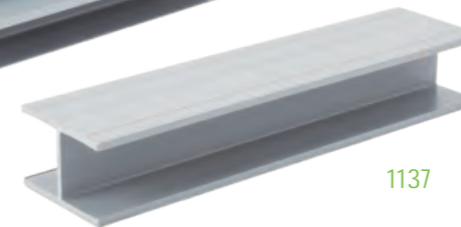
PVC hollow board panel, made of resin, is suitable for farrowing crates, nursery crates fencing board, effectively avoiding epidemic infection between piglets, easy to clean and suitable for piglet nest, effectively improving the heat preservation effect.

500mm×30mm 600mm×30mm PVC hollow panel  
 500mm×35mm 600mm×35mm PVC hollow panel  
 300mm×18mm PVC hollow panel  
 600mm×15mm PVC hollow panel  
 500mm×35mm thickening and weightening PVC hollow panel

## PVC PANEL CONNECTION



1136



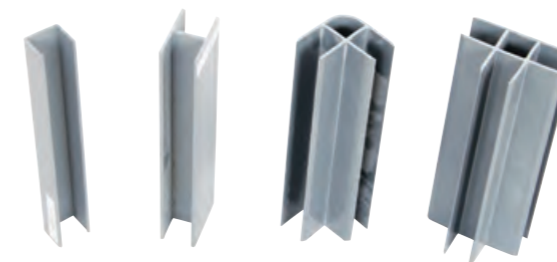
1137

**PVC Panel connection, Height 500mm, inner diameter 35mm**

30mm thick PVC hollow panel, made of resin, suitable for farrowing crates, nursery crates fencing board, effectively avoiding epidemic infection between piglets, easy to clean and suitable for piglet nest, effectively improve the insulation effect. 35mm thick PVC hollow panel with slanted ribs for enhanced sheet solidity, suitable for farrowing crates fence, nursery crates fence,  
 500mm × 35mm thickening and weightening PVC hollow panel, made of resin, suitable for farrowing crates, nursery crates fencing board, effectively avoiding epidemic infection between piglets, easy to clean and suitable for piglet nest, effectively improve the insulation effect.

A piglet nest assembled from a 15mm PVC panel can also be assembled with a variety of crates. The 18mm thick PVC hollow panel is designed for plug-in design and is mainly used for making piglet nests. It is durable, affordable and easy to install.

We can provide customers with PVC farrowing crates and nursery crates equipment, which can design reasonable solutions for different environments of customers.



1140-1143



1138



1139

STAINLESS STEEL

SS

PLASTIC

PC

## DRAIN



1144



1145

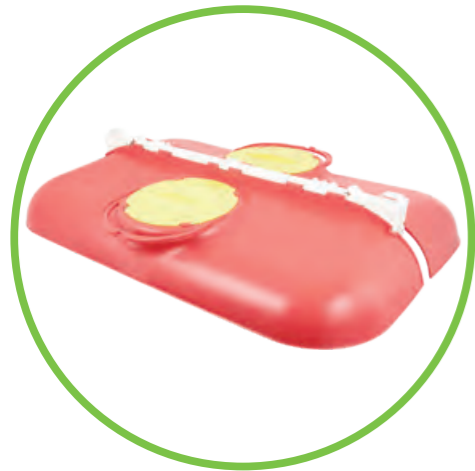


1146

## PIGLET NEST



1147



The Corner facilitates the maintenance of a microclimate that is optimal for piglets in farrowing phase without affecting the comfort of the sow, meaning room temperature can be reduced and keeping her away from the heat source that insulates the piglets. Especially recommended in cases where it needs to be used on an ongoing basis, as it has a fixed part.



### Advantages

- Protects the piglets from drafts and creates a microclimate under the bell-shaped cover to reduce heat loss
- More piglets per delivery and greater weight
- Higher feed consumption by the sow
- 20 to 40% reduction in energy consumption in farrowing pens
- No cracks that cause currents between the Ni-2 and the lamp or the hinge of the cover
- Easy to install and transport, can be used for a few days or the whole period of lactation
- Very durable and easy to clean



1148



The piglet nest facilitates the maintenance of a microclimate that is optimal for piglets in farrowing phase without affecting the comfort of the sow, meaning room temperature can be reduced and keeping her away from the heat source that insulates the piglets. Especially recommended in cases when its use is only needed temporarily or occasionally, as they are easily transportable and do not require any fixed installation.

- 1: size:L125\*W40\*D15cm /pcs, 16kg/2pc. 4pcs/ctn, mobile is a removable cover for piglets in farrowing. It's easy to carry over if switching from place to place.
- Very easy to carry over and to use.
  - Could reduce the energy cost up to 20-40% in the farrowing buildings.
  - Could increase by 0,2-0,5 alive weaned piglets per sow and year.
  - Better results in the weight of the weaned piglets.
  - Protecting from the air draughts.

2: Size:L132\*W65\*D52cm 6pcs/box,G.W./N.W.:38.9/38kgs.

The corner is a cover that provides for higher temperature creating microclimate for piglets while the temperature in the room is comfortable for the sow.

### CHARACTERISTICS

- Easy cleaning, can be lifted up, easy access to the bottom part.
- The upper lid is provided with an optional lid for installation of infrared lamp and LED.
- Different positions of the height.
- Easy installation.
- Can be adapted to any farrowing place.
- Special design makes cleaning and disinfection very easy.

3: Size: L128 \* W42 \* D10 cm

Material: Fiber Glass

Weight:

Color:Orange or Grey

Assemble parts:Stainless steel panel

### CHARACTERISTICS

- High temperature curing>90%,HK > 50.antibiosis,good for health.
- good insulativity, temperature retention, thermo insulating property;

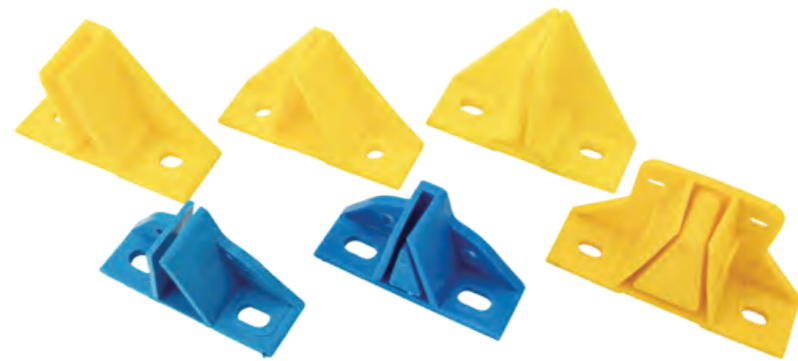
PLASTIC

PC

PLASTIC

PC

## SUPPORT BEAM



1149

### corrosion resistant fiberglass bearing beam for weaner/grower house

poultry floor beam base support, flooring beam support bracket

Bracket 02 is adjustable, convenient for support beam lever adjust

top channel width: 32mm, round parts ID 50MM

fiberglass supports beam

Fiberglass support beam installing

put floor grate on FRP support beam

other fiberglass profile for poultry farm construction



1150



1151



1152

The PVC Fence Pipe Bracket is used to install supporting metal



1153

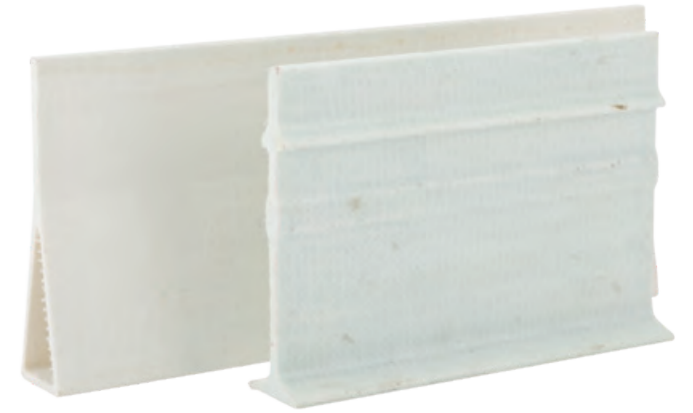


1154

The Basic Post Beam is a support beam that supports grills and is adjustable in height once installed, and easy to position.

Manufactured with polypropylene, synthetic resin and fibreglass, and not affected by the ammonia in slurry.

## FIBER GLASS

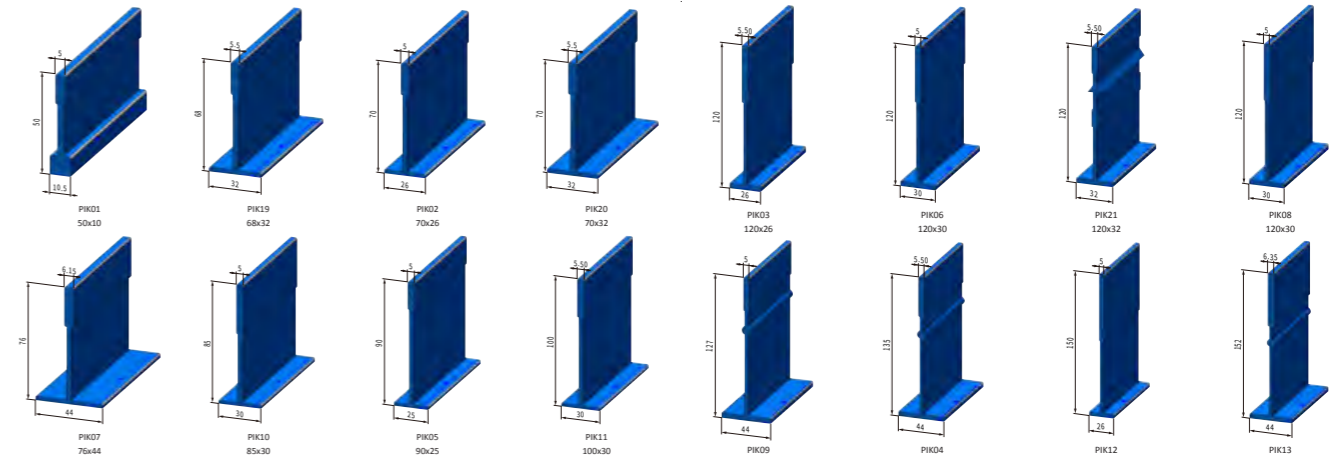


1155

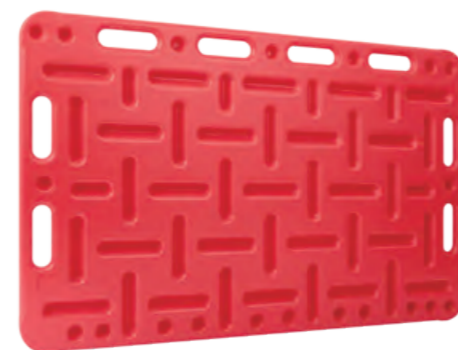
1156

Fiberglass support beam is made from pultruded fiberglass profiles specially designed to support slats in farrowing and nursery pen

Fiberglass support beam is ideal alternative to those traditional materials for its special advantages:  
Excellent Corrosion Resistance, wont rusty, rot  
Lightweight: 65% Lighter than Steel, easy for transport and fabricate  
Long maintenance-free life



## PIG PANEL BOARD



1157



1158



1159

### Pig panel board

1. Main materials are high-density polyethylene.
2. Anti-erode, more resistant to high temperature.
3. This product has passed the national quality certification and is trustworthy.
4. It can effectively improve the working efficiency when it's used for pig breeding and piglets injections

Big:120\*76\*3cm, 5kg

Midium :94\*76\*3cm,4kg

Small:76\*46\*3cm,2kg

PLASTIC

PC

PLASTIC

PC

## DEEP DROP DISPENSER



1160

### Technical characteristics:

Manufactured in high quality transparent plastic.

Capacity: 6L.

Sizes: L = 460 mm / Width = 150 mm.

### Design:

Easy installation, to assemble and to use.

Quick dispenser opening and closing system with a measuring spatula in Kg or l.

Designed in two parts to optimize transportation.

### D-15 includes:

Incorporate clip for animal control technical data sheet.

Medication cover with easy-opening tab.

Braided stainless steel cable for dispenser opening and closing.

Alimentary bolus for opening the feed distribution as it convenience.



1161



1163



1162

### Ball dispenser for gestation sows and heavy fattening pigs with restricted feed.

#### ADVANTAGES:

- Robust and durable.
- Excellent feed flow.
- Minimizes problems with wear of the ball rope.
- Easy adjustment.
- Excellent access for cleaning.
- Low transport cost.



1164



1165

## PIG SORTING PADDLE



1166

### "sorting paddle

(1) Material : High Strength Plastic

(2) Size:50cm(Length)\*25cm(Head length)

(3) Application for:pig,sheep,goat,sheep,horse,cattle and other animals

(4) Colour :Red"

### "Long Handle Sorting Paddle For Pig

1.Sorting paddle is quickly becoming a standard tool to aid in livestock handling

2.Light weight and comfortable to use.

3.Shake it and create noise to which animals respond."



1167

### Auto Level Control Valve for Troughs

- Vacuum-controlled water flow
- Maintains a consistent level of water
- For use in troughs and cup bowls
- These valves are controlled with a vacuum and a rubber membrane



1168



1169



1170

## WATER LEVEL CONTROLLER



PLASTIC

PC

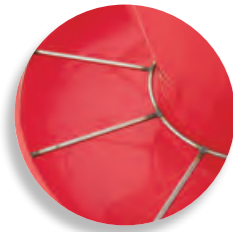
PLASTIC

PC

## MAXI PAN FEEDER



WEANING PAN WITH HOPPER  
MADE OF TOP QUALITY PLASTIC  
10 PLACES. EASY FIXING TO THE SLATS BY  
THE HOOK.



1171



1172



1173



1174



WEANING PAN WITH HOPPER  
MADE OF TOP QUALITY PLASTIC  
10 PLACES. EASY FIXING TO THE SLATS BY  
THE HOOK.



1175



1177



1176

OTHER PLASTIC BOWL FEEDERS



## PLASTIC FEED SHOVEL



1178

1179



1180



1181

Ergonomic feed scoop with liter indication for  
correct weighing.  
Weight 0,5 kg. Made of polypropylen. Handle is in  
the center.  
Lift correctly and avoid overload of wrist.  
- Lift correctly and avoid overloading the wrist  
joint



1182



1183

PLASTIC

PC

PLASTIC

PC



1184

The Swing Drinker Maxi, combined with a water level valve, provides water to both sows and boars and very heavy fattening pigs. Ideal for large groups of animals.



1185

**PLASTIC DRINKING BOWL**



1188

**PLASTIC DRINKING BOWL**



1186

Plastic drinking bowl  
 plastic drinking bowl for piglets  
 ABS drinking bowl for sheep  
  
 plastic bowl for cattle&horse  
 plastic bowl for cattle&horse  
 plastic bowl for cattle&horse



1187



1189 Plastic ball type drinker 1.5L,2.5L,4L,6L,8L,10L,15L.  
 1190  
 1191  
 1192



1193  
 1194  
 1195

High quality Plastic material  
 Smooth facial inside and outer  
 no blocking feed. Adjust the discharge speed  
 Feed can be evenly supplier to each piglets  
 hook up for fixing on slats floor  
 self-locking isolation of hazardous substances

PLASTIC  
 PC

PLASTIC  
 PC

## VETERINARY SYRINGE



1196



1197

1198

1199



1200

## ALUMINUM LAMPSHADE



1204

### Aluminium lamp cover

Infrared lampshade and holder  
220V/50HZ 250W  
E27 Ceramic Lamp holder,High temperature resistance Plastic lamp holder  
IP CLASS: IPX4



1205



1206



1207

PLASTIC

PC

ALUMINIUM

Alu

## OTHERS



1201



1202

- A must for applying Global ear tags
- Removable black plastic clip for applying electronic ear tags.
- Deep jaw makes proper placement easier.
- Grip is designed to ease hand fatigue from repeated use.
- each ear tag applicator with two super quality pin.
- sandy surface for protecting slipping.
- packaging: each piece with one blister packaging.  
OEM packaging is available
- type:best selling veterinary products cattle ear tag pliers



1203

STANDARD:GB, ANSI, BS, DIN, JIS

Product details :

- 1)Material: cast iron QT-450
- 2)Weight: by drawings.
- 3)Surface treatments: shot blast,powder coating,mechanical polish,paint,plate
- 4)Design: CAD design,3D design available.
- 5)Mould: desinged and done by ourselves.
- 6)Casting equipments: intermediate frequency furnaces,high-frequency furnaces,Vacuum investment melting furnaces..
- 7)Machining equipments: general lathes,grinding machines,CNC lathes,CNC machine center,milling machines,cnc milling machines,planers,drilling machines,wire cutting machine
- 8)Test equipments: Spectrograph,Physicochemical room,Hardness Meter,Coordinate Measuring machine(CMM)

Fine Grain Cast Iron

- Rims machined to run concentric with center hole
- All cast iron wheels have two spokes and finger grips. Available with or without handle
- Available with Black Epoxy finish and a plain finished handle with polished rim
- Other colors of Epoxy Finish available upon request



1208

- green powder-coated grey cast bowl
- bowl capacity 2 litres
- float cover made of stainless steel
- weight 6 kg
- water flow: 4 l/min at 0.5 bar; 6 l/min at 1 bar
- G 1/2 "connection on low-pressure float valve (22182), left or right are both available
- low pressure water bowls complete with low-pressure float valve

## ALUMINIUM BOWL

### Aluminium Drinking Bowl

- suitable for mounting on all kinds of water barrels
- drinking trough made of corrosion-free cast aluminium
- complete with flange gasket
- stainless steel nose paddle
- with low pressure valve
- size: L287\*W235\*H216 mm



1209

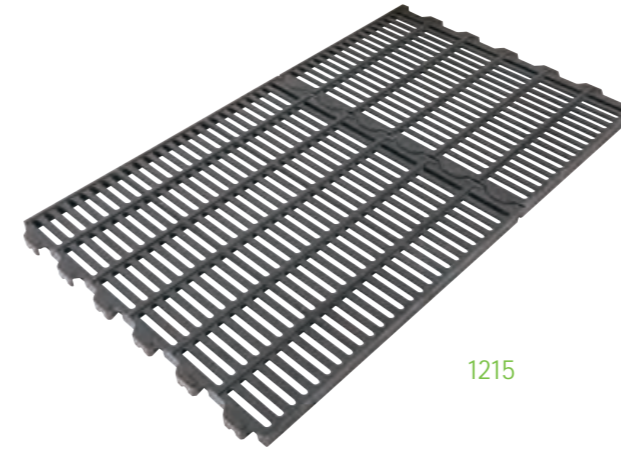
## CAST IRON SLATS

### Cast iron slats

Smooth surface and high/low textured for sow traction  
 Painting: surface painting and anti-corrosion painting.  
 600\*600 mm, 600\*400mm. Other customize size is acceptable.



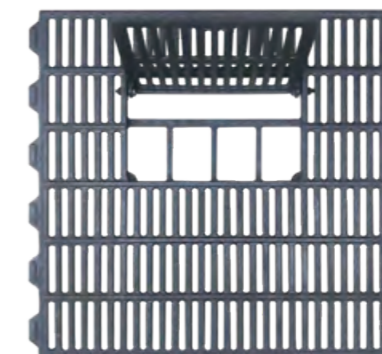
1214



1215



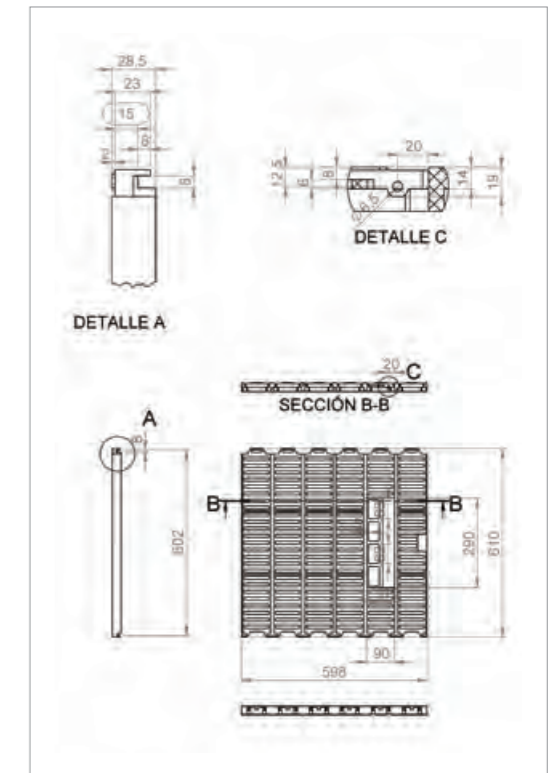
1216



1217



1218



## CASTING BOWL

- High strength cast iron, powder coated surface;
- Durable, high performance
- Water conserving design
- supports emission reduction
- Environmental friendly and efficient.

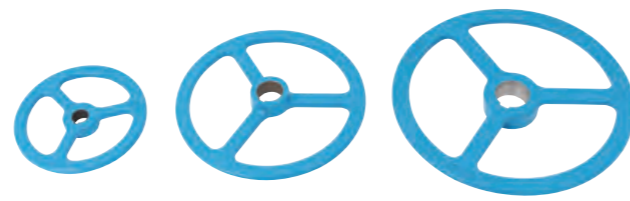


1211

## CAST IRON HAND WHEEL



1212



1213

JGM Tooling wheel  
 QT400 Steel wheels mechanized  
 VEB-225, VEB-325, VEB-375, VEB-400.

ALUMINIUM

Alu

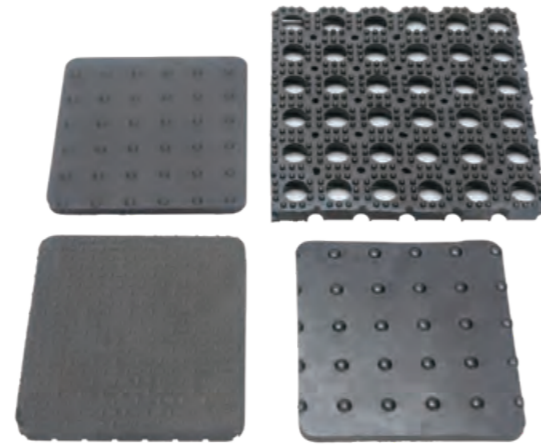
CASTING&WHEEL





**This Rubber Mat is ideal for agricultural, commercial and sporting uses. The anti-skid surface is safe and comfortable. Mats can be cut or interlocked, glued or fastened to any surface. An ideal rubber mat for horse stalls, barn flooring, gyms, garages, maintenance areas, workstations, or arena flooring.**

Heavy-duty 100% recycled rubber  
 Insulating properties  
 Noise and vibration absorbent  
 Surface pattern may vary by location  
 May be used as gym mats  
 5 year limited warranty  
 SIZE: THICKNESS: 6-30MM, WIDTH: 1-2.2M, LENGTH:1.83M OR CUSTOMIZED  
 MATERIAL: NR/NBR/SBR  
 COLOR: BLACK  
 PATTERN: Honeycomb Pattern,I-shaped,Orange lines,Moire Pattern,Dense Dot,  
 PERFORMANCE: Anti Slip, Wear Resistance, Aging Resistance, Acid And Alkali Resistance, Good Resistance To Tearing  
 APPLICATION: Horse & Cow stables, Calf & Pig pens, Heavy work areas, Truck beds



1220-1223



1229-1230  
 GN613-M12  
 Stainless steel  
 Carbon steel



1231-1233  
 Stainless steel 304 switch cap + Silica gel cap  
 28X19 mm



1234  
 Pet drinker



1235-1237  
 Stainless Steel tooth Cutting Clippers



1224  
 Aluminium wheel



1225



Feeding chain

1226



1227



1228



1238  
 Ø17 UCFC 203 PILLOW BLOCK BEARING 203



1239  
 tag Plier



1240  
 ZINC PLATED ADJUST RING.  
 Ø55/Ø63mm. Ø63/Ø75mm. Ø75/Ø90mm.



1241  
 Steel pulley wheel  
 Ø12-Ø20mm.



1242  
 Pet drinker connector



1243  
 Veterinary Magnet

OTHERS



OTHERS



## HAND WINCH

Trailer Winch enables safe, easy loading and unloading of boats. Features one-piece, heat-treated milled gears for durability. Compact, portable winch is simple to operate. Includes 11/64in. x 33ft. wire rope.

11/64in. x 33ft. wire rope is strong enough to pull loads up to 1000 lbs.

Handle is comfortable to use

One-piece, heat-treated milled gear mechanism provides durability and longer life

Compact size makes this winch portable and simple to operate

Galvanized steel is strong enough for tough jobs

1244

OTHERS



- Wide range loaded capacity
- Single speed
- 4.1:1 gear ratio
- Includes 11/64in. x 33ft. wire rope with safety hook

- One-piece, heat-treated milled gears
- Stainless steel or galvanize steel.
- Compact, portable design
- Simple operation

W.L.L/B.S.	800lbs/1200lbs, 1200lbs/1800lbs, 2500lbs/3750lbs, 3000lbs/4500lbs.
Certification	CE-SGS
Gear	Main Gear: $\Phi 9.6\text{cm} \times 6\text{mm}$ , $\Phi 13\text{cm} \times 6\text{mm}$ , Axle Gear: $\Phi 4.2\text{cm} \times 8\text{mm}$ , One Piece, Milling Shaped, Heat Treated Gears and Pawl
Body	Stainless steel or Steel plate A3, Thk: 2.5mm L 12cm * W 8.2cm * H 8cm L 13.5cm * W 9cm * H 9.5cm L 19cm; * W 10cm * H 11cm L 19cm * W 10cm * H 11cm
Handle	black or red ABS plastic: $\Phi 2.5\text{cm} \times 16\text{cm}$ steel shaft: L:19cm*W:2.5cm*T:0.5cm
Cable	$\Phi 4.0\text{mm} - \Phi 6.0\text{mm} \times 10\text{m}$ (A36 steel)
Hook capacity (size)	W.LL/BS: 1000kg/1500kg (60mm*88mm)
Finish	Stainless steel or Galvanized or Powder coated.
Transmission Structure	2way, Gear ratio: 3.1:1, 4.1:1 2 way 2 speed, Gear ratio: 4.1:1/8:1

## COOLING PAD



1219

OTHERS



### JGM Cooling Pad system

- Use the new material and the space crossing linking technology, high absorbability, high water-resistant, anti-mildew and long service life.
- Large evaporative area, cooling efficiency as high as 80%
- The product contains surface active agent, natural water absorbability, fast pervasion speed, lasting effectiveness. A drop of water can diffuse in 4-5 seconds. Height of absorb: 60-70mm/5 minutes, 200mm/1.5 hours, can achieve international standard.
- The products don't contain phenol which easy to skin allergy and other chemical substances, when installed non-toxic harmless to human body, safety, energy saving, environment protection and economic applicable
- Variety color: Brown, Green, Green/Brown colour, Black coated-single side(washable), Green coated-single side (washable), Yellow coated-single side (washable) Variety color: Brown, Green, Green/Brown colour, Black coated-single side(washable), Green coated-single side (washable), Yellow coated-single side (washable)
- Strict production as per standard, width of 600mm cooling pad involves 85 sheets; raw material adopt imported kraft paper(100GSM, thickness: 0.18-0.20mm, tension resistance at 70N, absorbability height as 45mm/10min, moisture at 5-8%, humidity at 18N).

Color	green	brown	black	yellow
Spec(corrugated height & angle)	5090	6090	7090	7060
Frame	GS frame	SS frame	AL frame	
Height(mm)	1000	1200	1500	1800-2000
Width(mm)	200	300	400	600
Thickness(mm)	100	150	200	300
Ripple Height(mm)	5	7	7	7
Paper origin	China	Finland	Sweden	
Volue 40"GP	56CBM	56CBM	56CBM	56CBM
MOQ	56CBM	56CBM	56CBM	56CBM
Price(USD)/CBM Without frame				

### Working Principle

When the water cross the cooling pad, the water become water film on the surface of the pad. The water film exchange heat with the passing air and evaporate into the air. As the principle of evaporative cooling, controlling the temperature and humidity through modifying humidifying volume and the ventilation size.